



# STARTER MOTORS

405-000-001

## “NEW REPLACEMENT” MOTORS FOR

- SNOW PLOWS
- SNOW BLOWERS
- SALT SPREADERS



### CANADA & EXPORT SALES

Dixie Electric  
517 Basaltic Road  
Concord, ON  
Canada L4K 4W8

Tel: 905-879-0533 | 800-461-5799  
Fax: 905-879-0532  
E-Mail: sales@dixie-electric.com  
www.dixie-electric.com



### U.S.A. SALES

Dixie Electric Inc.  
5600 Pioneer Creek Drive, Suite D  
Maple Plain, MN 55359  
U.S.A.

Tel: 763-475-6629 | 800-478-0608  
Fax: 763-475-6635 | 800-392-8719  
E-Mail: mn.sales@dixie-electric.com  
www.dixie-electric.us

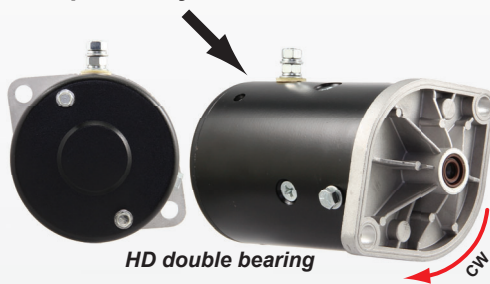
## SNOW PLOWS

### 406-04101\*

Replaced by **405-10101**  
12V, CW, 3", Permanent Magnet



**\*Replaced by HD Version**



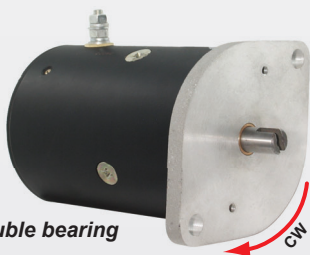
### 405-10101\*

12V, CW, 4.5", 1 Terminal, Slotted Shaft

**\*For 2 Terminals see 405-10113**

*Replaces*  
**Prestolite:** MKW-4009, MUE-6111S, MUE-7001  
**United Technologies:** MM18996  
**Wapsa:** 9130450083  
**Western Products:** 56058, 56062

*Application*  
**Western Snow Plows (Late)**



**HD double bearing**

### 405-10102

12V, CW, 4.5", Slotted Shaft

*Replaces*  
**Prestolite:** MEZ-7002  
**Western Products:** 25556

*Application*  
**Western Snow Plows (Early)**

## SNOW PLOWS



**HD double bearing**

### 405-10103

12V, CCW, 4.5", Slotted Shaft

*Replaces*  
**Prestolite:** MUE-6001  
**Monarch:** 8111

*Application*  
**Monarch Hydraulics,**  
**Northman Snow Plows**



**HD double bearing**

### 405-10107\*

12V, CW, 4.5", Slotted Shaft

**\*For 2 Terminals see 405-10116**

*Replaces*  
**Fenner:** 2529AB, AC  
**Meyer:** 15689, 15727

*Application*  
**Diamond Snow Plows, Fenner Fluid Power,**  
**Meyer Quick Lift Snow Plows**



**HD double bearing**

### 405-10113\*

12V, CW, 2 Terminals Ins. Grd., DD, Slotted Shaft

**\*For 1 Terminal see 405-10101**

*Replaces*  
**Prestolite:** 46-2584, 46-3618, MUE6103, S, MUE6206  
**Wapsa:** 9130450099  
**Western Products:** 56133

*Application*  
**Fisher Snow Plow, Western Snow Plow**

## SNOW PLOWS



**HD double bearing**

### 405-10116\*

12V, CW, 2 Terminals Ins. Grd., Slotted Shaft

**\*For 1 Terminal see 405-10107**

*Replaces*  
**Iskra:** AMJ4739  
**Meyer:** 15829, 15841

*Application*  
**Diamond, Meyer Quick Lift Snow Plows**



**HD double bearing**

### 405-10118

12V, CW, 4.5", 2 Terminals, Slotted Shaft

*Replaces*  
**Fisher:** 21500K  
**Western Products:** 21500

*Application*  
**Fisher Snow Plows,**  
**Western Snow Plows**



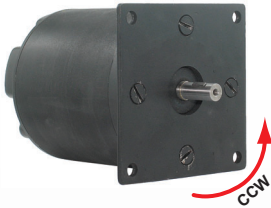
### 406-04100

12V, CCW, 3", Permanent Magnet, Slotted Shaft

*Replaces*  
**Meyer:** 15054  
**Prestolite:** MGL-4005; MGL-4105; MKW-4007; 46-2415, -4160  
**United Technologies:** 4882640MO30MM, MM48826

*Application*  
**Meyer Electro Lift Snow Plows**  
(E-46, E-46H, E-47, E-47H)

## SALT SPREADERS

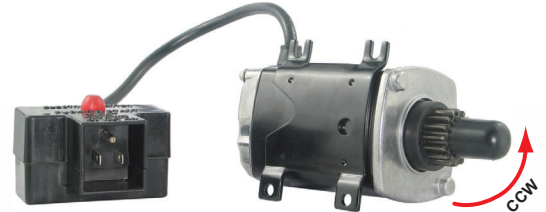


**406-12101**  
12V, CCW

*Replaces*  
**Meyer:** 36218  
**United Technologies:**  
4854420MO48HM, SM48544

*Application*  
Meyer Salt Spreader Motor

## SNOW BLOWERS

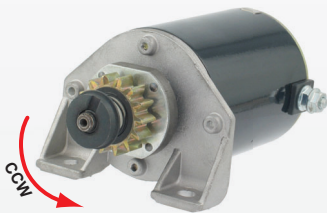


**214-10701**  
120V, CCW, 16T

*Replaces*  
**Ariens:** 72403600  
**Tecumseh:** 33329, A, B, C, D, E

*Application*  
**Tecumseh:** HM, HMS70-100, OHM,  
OHSK120 Eng.

## SNOW BLOWERS



**213-10102**  
12V, CCW, 14T, PMDD

*Replaces*  
**Briggs & Stratton:** 695479

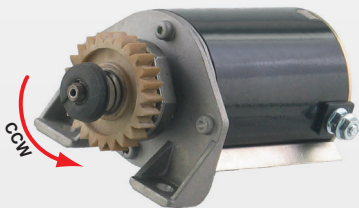
*Application*  
**Briggs & Stratton Eng.**



**214-10702**  
120V, CCW, 9T

*Replaces*  
**Ariens:** 72200600  
**Tecumseh:** 33290, A, B, C, D, E

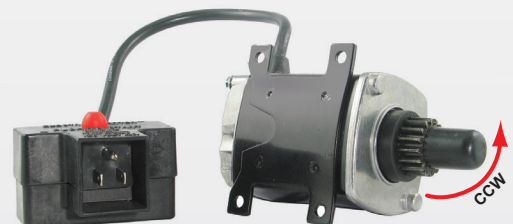
*Application*  
**Tecumseh:**  
HS, HSSK40-50, OHSK50-60 Eng.



**213-10103**  
12V, CCW, 24T, PMDD

*Replaces*  
**Briggs & Stratton:** 694504

*Application*  
**Briggs & Stratton Eng.**



**214-10703**  
120V, CCW, 16T

*Replaces*  
**Ariens:** 72403500  
**Tecumseh:** 33328, A, B, C, D

*Application*  
**Tecumseh:** TVM125-140, H, HSK50-70,  
HSK365 Eng.



# STARTER MOTORS

405-000-001

## CROSS REFERENCE

REFERENCE	SPS	REFERENCE	SPS	REFERENCE	SPS	REFERENCE	SPS
<b>ARIENS</b>		<b>LESTER</b>		<b>PRESTOLITE</b>		<b>TECUMSEH</b>	
72200600	214-10702	10757	405-10113	MDY-6104	405-10103	33290E	214-10702
72403500	214-10703	10758	405-10116	MDY-6104XP	405-10103	33328A	214-10703
72403600	214-10701	10778	405-10118	MDY-6119	405-10103	33328B	214-10703
		10781	405-10103	MDY-7027	405-10103	33328C	214-10703
		10795	405-10113	MDY-7043	405-10103	33328D	214-10703
<b>BRIGGS &amp; STRATTON</b>				MDY-7050	405-10103	33329A	214-10701
694504	213-10103	<b>MEYER PRODUCTS</b>		MDY-7057	405-10103	33329B	214-10701
695479	213-10102	15054	406-04100	MDY-7057A	405-10103	33329C	214-10701
		15689	405-10107	MDY-7059	405-10103	33329D	214-10701
<b>FENNER STONE</b>		15727	405-10107	MDY-7068	405-10103	33329E	214-10701
2529-AB	405-10107	15829	405-10116	MEZ-7002	405-10102	33542A	214-10701
2529-AC	405-10107	15841	405-10116	MGL-4005	406-04100		
		36218	406-12101	MGL-4105	406-04100	<b>UNITED TECHNOLOGIES</b>	
<b>FISHER</b>				MHA-6001	405-10103	4854440	406-12101
21500K	405-10118	<b>MONARCH HYDRAULICS</b>		MHA-6001S	405-10103	1899628MO30MM	405-10101
		8080	405-10103	MHN-4001	405-10103	4854420MO48HM	406-12101
<b>ISKRA</b>		8092	405-10103	MHN-4001A	405-10103	4882640MO30MM	406-04100
11.212.484	405-10103	8111, S	405-10103	MHN-4005	405-10103	4882640MO30SM	406-04100
MJ4739	405-10116	8112	405-10103	MKW-4007	406-04100	M0551046A	406-04100
				MKW-4009	405-10101	MM18996	405-10101
<b>J.S. BARNES</b>		<b>MTE HYDRAULICS</b>		MUE-6001	405-10103	MM48826	406-04100
2200478	405-10103	39200292	405-10103	MUE-6001S	405-10103	SM48544	406-12101
2200480	405-10103	39200380	405-10103	MUE-6103	405-10113	SM48826	406-04100
2200727	405-10103	39200388	405-10103	MUE-6103S	405-10113		
2200776	405-10103	39200443	405-10103	MUE-6111S	405-10101	<b>WAPSA</b>	
2200820	405-10103	39200467	405-10103	MUE-6201	405-10103	9130450061	405-10103
2200849	405-10103			MUE-6202A	405-10118	9130450064	405-10103
		<b>PRESTOLITE</b>		MUE-6202AS	405-10118	9130450081	405-10103
<b>LESTER</b>		46-178	405-10103	MUE-6206	405-10113	9130450083	405-10101
5200	406-04100	46-806	405-10102	MUE-6209	405-10107	9130450099	405-10113
5897	214-10702	46-948	405-10103	MUE-6301	405-10103		
5898	214-10701	46-2001	406-04100	MUE-7001	405-10101	<b>WESTERN PRODUCTS</b>	
5899	214-10703	46-2093	405-10103	MUE-7003	405-10103	21500	405-10118
5936	213-10103	46-2107	405-10103	MUE-7003S	405-10103	25556	405-10102
5937	213-10102	46-2220	405-10103	MUE-7004	405-10103	56058	405-10101
6033	405-10103	46-2415	406-04100	MUE-7005	405-10103	56062	405-10101
6034	405-10103	46-2473	405-10101	MUE-7005S	405-10103	56133	405-10113
6036	405-10103	46-2584	405-10113	MUE-7006	405-10103		
6067	405-10102	46-2777	405-10103				
6075	406-04100	46-3618	405-10113	<b>TECUMSEH</b>			
6119	405-10103	46-3620	405-10103	30867	214-10703		
6121	405-10103	46-3938	405-10101	33290	214-10702		
6126	405-10103	46-4160	406-04100	33328	214-10703		
10710	405-10107	46-4175	405-10118	33329	214-10701		
10711	406-12101	46-4196	405-10107	37000	214-10701		
10725	405-10101	FPOR-4001	406-04100	33290A	214-10702		
10728	405-10103	MDY-5057	405-10103	33290B	214-10702		
10751	405-10103	MDY-6101	405-10103	33290C	214-10702		
10752	405-10103	MDY-6102	405-10103	33290D	214-10702		
10753	405-10103						