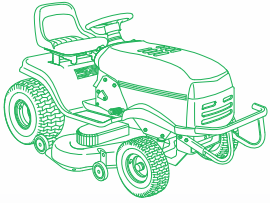




100%  
New

# STARTER MOTORS



## for **Mowers, Tractors** & other Industrial applications

with Briggs & Stratton air cooled engines, 7 thru 18HP



### FEATURES & BENEFITS

#### • Engine Tested

All units are validated on live engine, exceeding 6000 cycle starts.

#### • New Profile Gears

As per the latest Briggs & Stratton upgrade, to reduce flywheel wear and ensure smooth engagement.

#### • Exact Housing Fitting

Housings are verified for application fit, using specialized software and a digital inspection system to avoid unnecessary returns.

#### • Ground Strap

Like the OE, each unit is provided with its own ground strap to be used as needed.

#### • Serrated B+ Nut Face

This feature prevents the battery cable from slipping during the starter installation.

#### • ROHS Compliant

Our units meet the "Restriction of Hazardous Substances"(ROHS) standard, enforced in many countries.



#### 213-03104

12V, 16T, CCW, PMDD  
108mm Field Case

#### Used on:

- Briggs & Stratton
- Cub Cadet
- Generac
- John Deere
- Scotts
- Toro

w/ Briggs & Stratton Eng.

#### Replaces:

#### Briggs & Stratton

393499, 394943, 490420, 490920, 494198, 494990, 497401, 499521, 795121

#### Cub Cadet

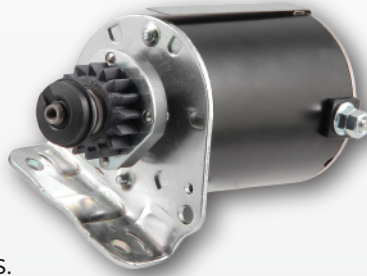
BS499521

#### John Deere

LG499521, MIA11175, SE501860

#### Toro:

784340



#### 213-07103

12V, 16T, CCW, PMDD  
97mm Field Case

#### Used on:

- Briggs & Stratton
- Cub Cadet
- John Deere
- Sabo
- Toro

w/ Briggs & Stratton Eng.

#### Replaces:

#### Briggs & Stratton

391423, 392744, 392749, 394805, 435303, 491766, 494325, 497595, 691262, 693054

#### John Deere

AM37352, AM39137, AM39285, LG497595, LG691262, MIU13772, SE501880

#### United Technologies

SM01965



#### 213-07104

12V, 15T, CCW, PMDD  
97mm Field Case

#### Used on:

- John Deere

w/ Briggs & Stratton Eng.

#### Replaces:

#### John Deere

MIA13038



#### 213-07122

12V, 14T, CCW, PMDD  
97mm Field Case, Steel Gear\*

#### Used on:

- Briggs & Stratton
- Cub Cadet
- John Deere
- New Holland
- Sabo
- Scotts
- Toro

w/ Briggs & Stratton Eng.

#### Replaces:

#### Briggs & Stratton

693551

#### John Deere

LG693551, MIA13018, SE501848

#### New Holland

BS693551

\*for applications with steel flywheel

### CANADA & EXPORT SALES

Dixie Electric Ltd. Tel.: 905-879-0533 800-461-5799  
517 Basaltic Road Fax: 905-879-0532  
Concord, ON. e-Mail: sales@dixie-electric.com  
Canada L4K 4W8 www.dixie-electric.com

### U.S.A. SALES

Dixie Electric Inc. Tel.: 763-475-6629 800-478-0608  
5600 Pioneer Creek Drive, Suite D Fax: 763-475-6635 800-392-8719  
Maple Plain, MN 55359 e-Mail: mn.sales@dixie-electric.com  
U.S.A. www.dixie-electric.us